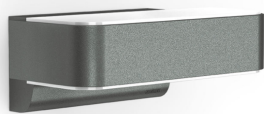


Specifications Steinel Sensor Lamp L 810 LED iHF Anthracite



[View Product](#)

General Information

SKU	220279
EAN	4007841009847
Manufacturer Code	009847
Brand	Steinel
Manufacturer Name	Steinel sensor lamp L 810 LED iHF, anthracite
Any Lamp all-in warranty	3 Years
Average Lifetime (h)	50000

Technical Information

Technology	LED Integrated
Voltage (V)	220-240
Wattage	12.5W
Dimmable	Not Dimmable
Colour Code	830 Warm White
Colour temperature (Kelvin)	3000 Warm White
Colour Rendering (Ra)	80-89
Colour of Light	White
Light colour options	Single Color
Luminous Flux (Lumen)	612lm
Luminous Efficacy (lm/W)	49

Tiltable	No
Mounting Method	Wall mounted
Emergency Lighting	No Emergency Unit
Product Type Category	LED Decorative Lighting

Fixture Information

Fixture Connection	Wire connector
Suitable for Outdoor	Yes
IP-rating	IP44
Impact Protection (IK)	IK07 - 2 joules
Operating Temperature	-20 to +45
Colour of the Fixture	Silver
Housing	Aluminium
Colour of material	Anthracite
Series	Domestic

Dimensions

Length (mm)	145
Width (mm)	88
Height (mm)	230

Sensor Information

Type of sensor	Why Any-lamp? Light Sensor, Motion Sensor
Sensor Detection Angle (degree)	160
Sensor Reach (m)	5
Sensor Time Setting	5 sec - 15 min

 [Order from the largest lighting specialist in Europe](#)  [Customised quotation](#)